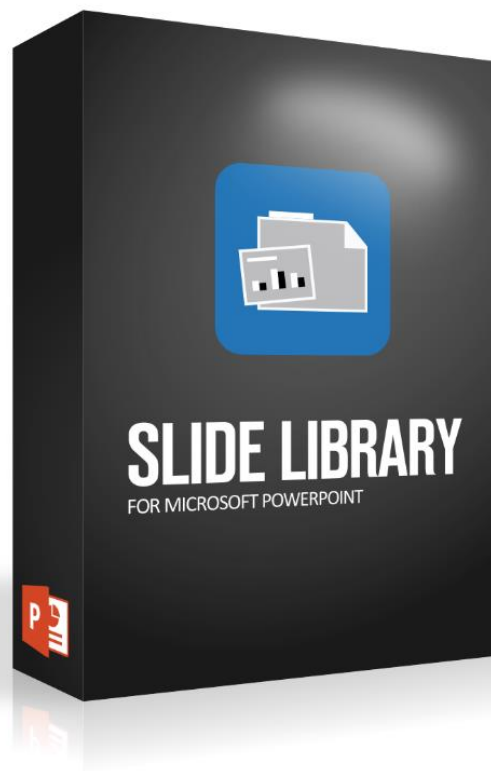


Manual for the MS PowerPoint Add-In



Contents

1	About the MS PowerPoint Add-In SlideLibrary	3
2	Technical requirements	3
3	Installation	3
3.1	Installation using the setup file.....	3
3.1.1	Installation assistant	3
3.1.2	Unsupervised installation	6
3.1.3	Installation of individual files using a setup routine	6
3.1.4	Installation of several library files through the setup routine	6
3.2	Manual installation	7
3.2.1	Activation using PowerPoint add-in management	7
3.2.2	Activation using the registry file	7
4	Configuration	9
4.1	Standard path	9
4.2	The sample slide files	9
4.3	Swap banner	9
4.4	Configuration of the SlideLibrary	9
4.4.1	Adding library files	10
4.4.2	Adding directories with libraries.....	10
4.4.3	Generalisation of paths through environmental/system variables	10
4.4.4	Removing entries	10
4.4.5	Hiding the configuration dialog	10
4.4.6	The configuration file	10
4.5	The admin tool for the SlideLibrary	11
4.5.1	Applying titles as names	12
4.5.2	Creating a new category	12
4.5.3	Deleting a category	12
4.5.4	Editing keywords.....	12
4.5.5	Width of the thumbnails.....	12
4.5.6	Number of slides per line	12
4.5.7	Zoom factor	13
4.5.8	Copy master activated	13
5	Application	14
5.1	Main dialog of the SlideLibrary	14
5.1.1	Thumbnail generation.....	15
5.1.2	Selection of libraries	15
5.1.3	Selection of slides to be added	15
5.1.4	Copying the slide master	15
5.2	Extended SlideLibrary dialog.....	16
5.2.1	Slide search	16
5.2.2	Sorting of the slide selection	17
6	Uninstall	18
6.1	Deactivation of the SlideLibrary add-in	18
6.1.1	Deactivation via PowerPoint.....	18
6.1.2	Manual removal of registry entries	18
6.2	Removing the add-in files	18
7	Index of key words	19
8	Index of figures.....	19

1 About the MS PowerPoint Add-In SlideLibrary

The SlideLibrary Add-In for Microsoft PowerPoint (2003-2016) allows you to centrally manage your company's slides in slide pools or libraries. This allows your employees and colleagues to easily use specific slides in your corporate design, to put together individual presentations and to centrally manage your company's slides in slide pools or libraries.

2 Technical requirements

All current Microsoft Windows 32-bit and 64-bit operating systems are supported, and the tool can also be used on terminal servers.

Windows XP, Windows Vista, Windows 7, Windows 8, Windows Server 2003, Windows Server 2008, Server 2012

Supported PowerPoint versions (32-bit and 64-bit):

With the file format .ppa: XP, 2003
With the file format .ppam: 2007, 2010, 2013, 2016

The MacOS versions of Microsoft PowerPoint are not supported.

3 Installation

The SlideLibrary add-in can be installed with the supplied setup file. All of the necessary steps required for a manual installation are listed in Section 3.2.

3.1 Installation using the setup file

The executable setup file belonging to the delivery scope includes the required files, copies these into the file system and activates the add-in in PowerPoint. In addition to the interactive installation assistant, the setup file also provides an unsupervised mode that allows an automated installation.

3.1.1 Installation assistant

The installation assistant provides a "Standard Installation" and a "Custom Installation".

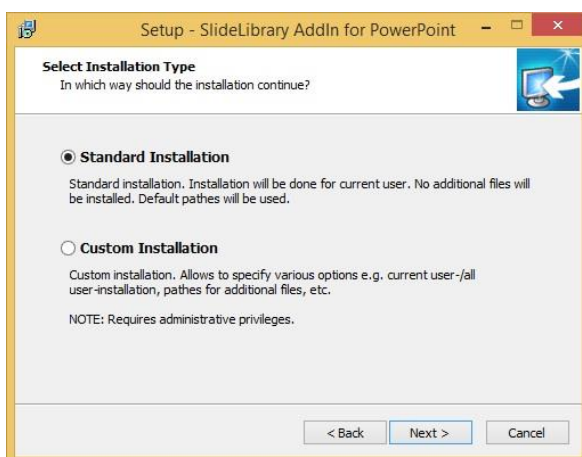


Figure 1: Choosing the installation type

3.1.1.1 Standard installation (recommended)

The standard installation does not require any administrator privileges, but only allows users to choose the PowerPoint version for which the SlideLibrary add-in should be installed. The following standard values are set automatically both for the installation path and for the installation context (installation only for the current user/for all users of the computer):

Installation path: Standard add-in directory for PowerPoint
(%appdata%\Microsoft\AddIns)

Installation context: Installation only for the current user

3.1.1.2 Custom installation

Custom installation allows the user to choose the installation path for the SlideLibrary add-in, the installation context, and the PowerPoint version for which the SlideLibrary add-in is to be installed. Administrator privileges are required for the custom installation. If there are no administrator privileges, the “Custom installation” option cannot be chosen.

3.1.1.2.1 Choosing the installation path

If custom installation has been selected, an individual installation path can be chosen.

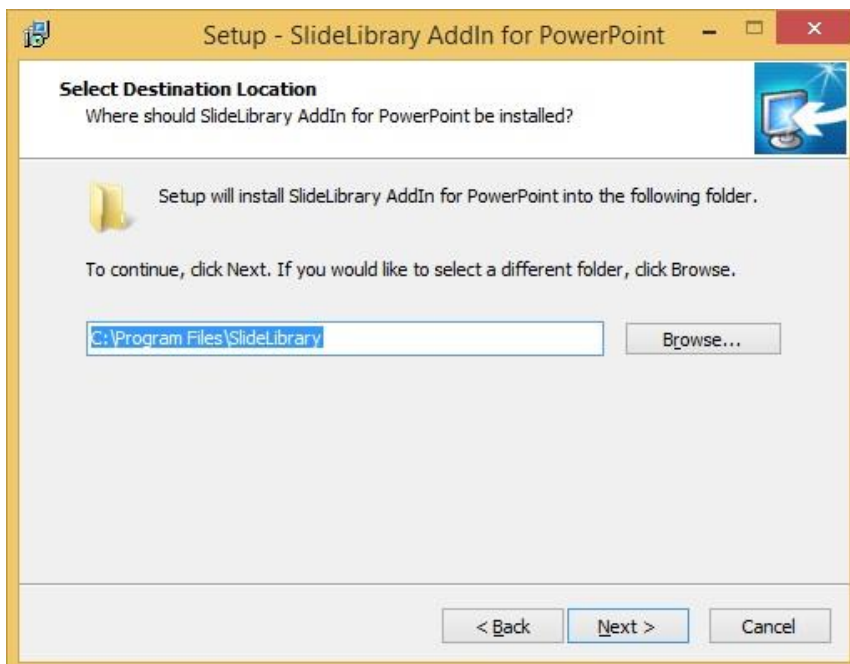


Figure 2: Choosing the destination location

3.1.1.2.2 Choosing the installation context

The installation can optionally be performed for the current user only or alternatively for all users on the local machine.

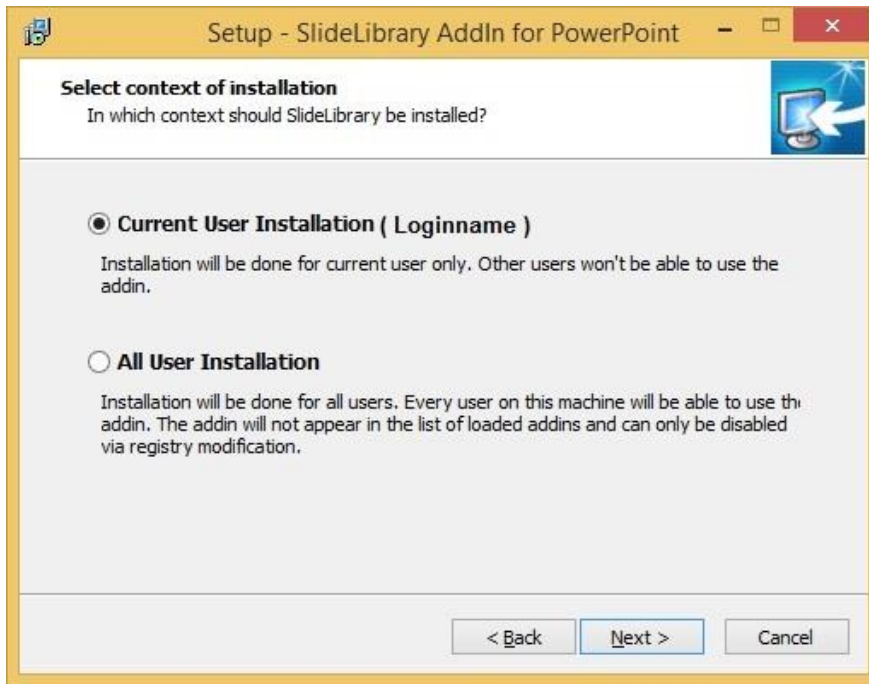


Figure 3: Choosing the context

3.1.1.2.2.1 Current user installation

If this option is chosen, the SlideLibrary add-in is only installed for the user who is registered at the time of the installation. Other users cannot use the SlideLibrary add-in. After the installation, the add-in is displayed in PowerPoint's list of available add-ins.

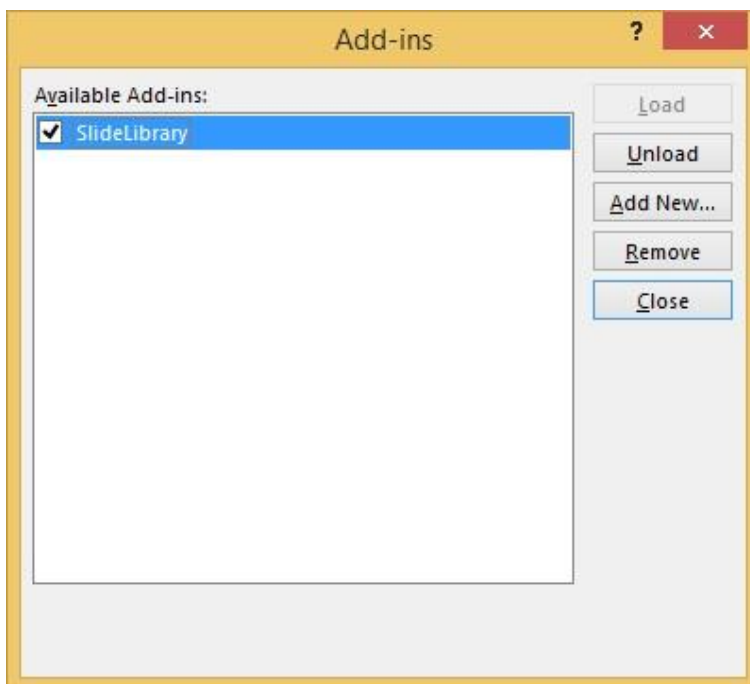


Figure 4: Managing the PowerPoint add-ins

3.1.1.2.2.2 Installation for all of the computer's users

Choosing this option installs the SlideLibrary add-in for all of the computer's users. After the installation, the SlideLibrary add-in is not displayed in PowerPoint's list of available add-ins.

3.1.2 Unsupervised installation

By transferring command line parameters when calling the setup routine you can also use the installation in unsupervised mode. For example, you can execute the setup routine using a script. The following parameters must always be given for unsupervised installations. This corresponds to the standard installation in interactive mode (see 3.1.1.1).

`/verysilent /suppressmsgboxes /sp-`

and/either

`/type=full`

(For the installation of all of the PowerPoint versions found)

or

`/components="PP2016, PP2013, PP2010, PP2007, PP2003, PPXP"`

(To choose one or several required PowerPoint versions,
possible components are: PP2016, PP2013, PP2010, PP2007, PP2016, PP2003, PPXP.
Specifying all available components is equivalent to indicating `"/type=full"`.)

Both variants only consider those PowerPoint versions that are found through the setup. All other components indicated are ignored.

3.1.2.1 Parameters for custom settings

You can use the following parameters to perform the settings using the "Custom installation" (see 3.1.1.2). As in interactive mode, administrator privileges are therefore also required for the user performing the implementation.

3.1.2.1.1 Installation path

`/path=C:\AnyPath`

`/path="C:\Any Path with Spaces"`

(default: `/path="C:\Program Files\SlideLibrary"`)

3.1.2.1.2 Installation context

`/context=current`

`/context=all`

(default: `/context=current`)

3.1.3 Installation of individual files using a setup routine

In interactive mode and unsupervised mode, the setup routine supports the automatic installation of various external files, thereby allowing the installation to be adjusted individually. When the setup routine is being executed, the files must be in the same directory as the setup routine itself.

3.1.3.1 Overview of files that (can) be installed

SlideLibrary.liz	A valid licence file
SlideLibrary.jpg	An individual banner graphic (see 4.3)
SlideLibrary.ini	The configuration file (see 4.4.6)
SlideLibrary.ppt(x)	An individual SlideLibrary file

3.1.4 Installation of several library files through the setup routine

If you want to install also several library files, during the installation these files must be located in a "SlideLibrary" subdirectory from which the setup routine is executed.

Further options for using library files are described in section 4.4 "Configuration of the SlideLibrary".

3.2 Manual installation

You can activate the SlideLibrary using PowerPoint's add-in management or perform the activation automatically using registry entries.

3.2.1 Activation using PowerPoint add-in management

- Under PowerPoint XP, 2003:
 - Choose "Extras"
 - Choose "Add-Ins..."
 - In the add-ins dialog that appears, click on "Add New..."
 - In the Dialog file, choose SlideLibrary.ppa and click OK
 - In the Add-Ins dialog, click on the "Close" button
- Under PowerPoint 2007, 2010, 2013, 2016:
 - Choose the "File" tab or the Office button in 2007
 - Choose "Options"
 - In the Options dialog that appears, choose the "Add-Ins" section
 - In the "Manage:" list, choose the list entry "PowerPoint Add-ins"
 - Click on the "Go..." button
 - In the add-ins dialog that appears, click on "Add New..."
 - In the dialog box, choose SlideLibrary.ppam and click OK
 - In the Add-Ins dialog, click on the "Close" button

3.2.2 Activation using the registry file

Note: The incorrect use of the registry editor can cause serious damage to your computer. Be careful and only implement changes if you are quite sure what you are doing.

The SlideLibrary add-ins can also be installed by manually copying the required files and adding the registry entries. The following steps are required for a manual installation of the SlideLibrary add-in:

- Copy the add-in file into the desired installation directory (henceforth also referred to as the **target directory**), depending on the PowerPoint version installed:
 - For PowerPoint 2007, 2010, 2013, 2016: copy the "SlideLibrary.ppam" add-in file into the target directory
 - For PowerPoint XP, 2003: copy the "SlideLibrary.ppa" add-in file into the target directory

Note: PowerPoint's standard add-in directory is "%appdata%\Microsoft\AddIns"
- Copy the "SlideLibrary.liz" licence file into the target directory.
- Copy the "SlideLibrary.ini" configuration file (if available, see 4.4.6) into the target directory
- If you are using local directories for the library file in the INI file, you must also copy these to the locations indicated in the INI file.
- Adding registry entries, depending on the PowerPoint version and installation context, to the registry path composed as follows (henceforth described as [RegPath]):
 - Choose the registry root according to the installation context (henceforth described as [RegRoot]):
 - Installation only for the current user: The registry root "HKEY_CURRENT_USER" (HKCU for short) must be chosen
 - Installation for all users of the computer: The registry root "HKEY_LOCAL_MACHINE" (HKLM for short) must be chosen
 - Choice of the registry subpath depending on the PowerPoint version installed (henceforth referred to as [RegOV]):

- For PowerPoint XP: 10.0
- For PowerPoint 2003: 11.0
- For PowerPoint 2007: 12.0
- For PowerPoint 2010: 14.0
- For PowerPoint 2013: 15.0
- For PowerPoint 2016: 16.0

The registry path is then:

[RegPath]=[RegRoot]\Software\Microsoft\Office\[RegOV]\PowerPoint\AddIns

So for example, for an installation for the current user

Only for current user

PowerPoint XP	HKEY_CURRENT_USER\Software\Microsoft\Office\10.0\PowerPoint\AddIns\
PowerPoint 2003	HKEY_CURRENT_USER\Software\Microsoft\Office\11.0\PowerPoint\AddIns\
PowerPoint 2007	HKEY_CURRENT_USER\Software\Microsoft\Office\12.0\PowerPoint\AddIns\
PowerPoint 2010	HKEY_CURRENT_USER\Software\Microsoft\Office\14.0\PowerPoint\AddIns\
PowerPoint 2013	HKEY_CURRENT_USER\Software\Microsoft\Office\15.0\PowerPoint\AddIns\
PowerPoint 2016	HKEY_CURRENT_USER\Software\Microsoft\Office\16.0\PowerPoint\AddIns\

For all users of the computer

PowerPoint XP	HKEY_LOCAL_MACHINE\Software\Microsoft\Office\10.0\PowerPoint\AddIns\
PowerPoint 2003	HKEY_LOCAL_MACHINE\Software\Microsoft\Office\11.0\PowerPoint\AddIns\
PowerPoint 2007	HKEY_LOCAL_MACHINE\Software\Microsoft\Office\12.0\PowerPoint\AddIns\
PowerPoint 2010	HKEY_LOCAL_MACHINE\Software\Microsoft\Office\14.0\PowerPoint\AddIns\
PowerPoint 2013	HKEY_LOCAL_MACHINE\Software\Microsoft\Office\15.0\PowerPoint\AddIns\
PowerPoint 2016	HKEY_LOCAL_MACHINE\Software\Microsoft\Office\16.0\PowerPoint\AddIns\

For all of the computer's users (64-bit Windows with 32-bit Office)

PowerPoint XP	HKEY_LOCAL_MACHINE\Software\Wow6432Node\Microsoft\Office\10.0\PowerPoint\AddIns\
PowerPoint 2003	HKEY_LOCAL_MACHINE\Software\Wow6432Node\Microsoft\Office\11.0\PowerPoint\AddIns\
PowerPoint 2007	HKEY_LOCAL_MACHINE\Software\Wow6432Node\Microsoft\Office\12.0\PowerPoint\AddIns\
PowerPoint 2010	HKEY_LOCAL_MACHINE\Software\Wow6432Node\Microsoft\Office\14.0\PowerPoint\AddIns\
PowerPoint 2013	HKEY_LOCAL_MACHINE\Software\Wow6432Node\Microsoft\Office\15.0\PowerPoint\AddIns\
PowerPoint 2016	HKEY_LOCAL_MACHINE\Software\Wow6432Node\Microsoft\Office\16.0\PowerPoint\AddIns\

The following entries must be added to the applicable registry path [RegPath] to configure the target computer:

- A "SlideLibrary" key
 - A "Path" registry entry of the type "string" with the value of the installation path of the add-in file (see target directory) must be added to the [RegPath]\SlideLibrary key
 - An "AutoLoad" registry entry of the type "dword" with the value "00000001" must be added to the [RegPath]\SlideLibrary key

4 Configuration

4.1 Standard path

If no paths have yet been configured for library files (through the configuration dialog (see 4.4) or the configuration file (see 4.4.6) of the SlideLibrary for reasons of compatibility with earlier versions of the SlideLibrary, library files are initially searched by default in the work group template directory or in the user template directory. If this does not lead to a result, the search continues in the directory containing the SlideLibrary add-in. If this also does not lead to a result, the search continues in the directory containing the SlideLibrary add-in.

4.2 The sample slide files

The SlideLibrary is delivered with a sample slide file in PPT format and in PPTX format. As described in 3.1.4, these files are contained in a “SlideLibrary” subdirectory.

4.3 Swap banner

The SlideLibrary dialog’s banner graphic can be replaced by an individual banner. Your banner image should be 2560x90 pixels in size and must be in .jpg format. The file must be stored in the same directory as the SlideLibrary add-in and must have the filename “SlideLibrary.jpg”.

4.4 Configuration of the SlideLibrary

In the basic configuration, the SlideLibrary is inserted as a split button in the menu ribbon on the “Start” tab. Clicking on the arrow below the icon opens a menu through which the configuration dialog can be opened.

The SlideLibrary’s configuration dialog allows you to add individual library files or entire directories with library files for use with the SlideLibrary.

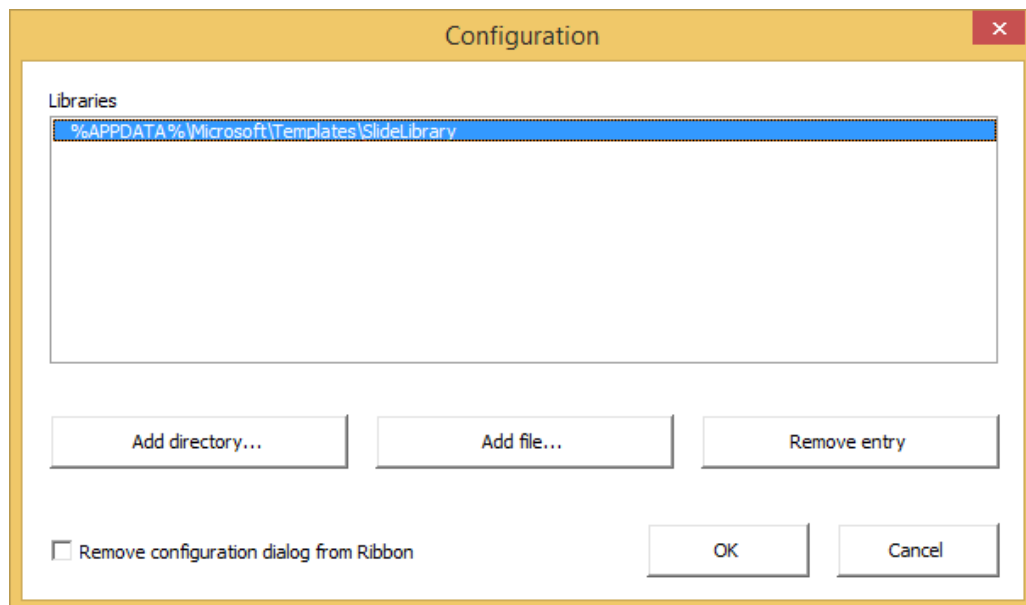


Figure 5: SlideLibrary configuration dialog

4.4.1 Adding library files

Choosing the “Add file...” button allows you to add individual library files in .ppt- or .pptx format. When you click on the button a file selection dialog opens. Here, you can navigate to the desired library file. The chosen file is then added to the list of libraries used in the configuration dialog.

4.4.2 Adding directories with libraries

In addition to the possibility of adding individual library files for use with the SlideLibrary, you have the option to add entire directories incl. subdirectories with library files to the list of libraries used. Choose the “Add directory...” button and navigate to the desired target directory in the file selection dialog that follows. As for the individual library files, the chosen path is then added to the list of libraries used in the configuration dialog.

4.4.3 Generalisation of paths through environmental/system variables

When files or directories are added, the path you have chosen is automatically checked for a number of system variables. A notification appears if system variables are found. You can accept or refuse the suggestion.

By using system variables you can use the same configuration for all users, even if the libraries are e.g. stored in user profiles, as was the case in the older versions of the SlideLibrary.

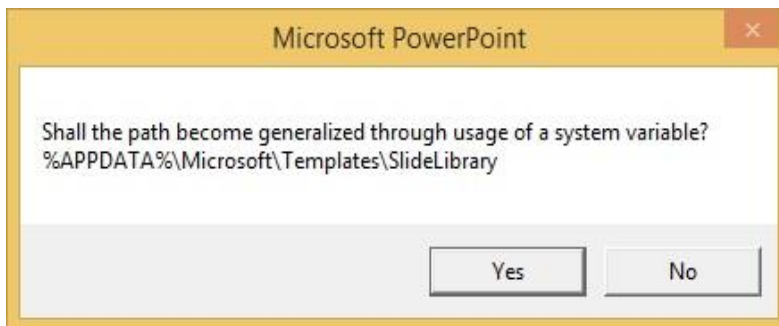


Figure 6: Notification about the generalisation of paths

4.4.4 Removing entries

In order to remove entries in the list of libraries used, choose the entry to be removed from the list using your mouse and then click on the “Remove entry” button.

4.4.5 Hiding the configuration dialog

To prevent users changing the selection of libraries, the configuration path can be hidden from the menu ribbon. To do this, activate the control box “Remove this configuration dialog from the menu bar” and then close the configuration dialog by clicking on the “OK” button. A warning message appears, indicating that the configuration after the dialog is hidden can only be changed by editing the SlideLibrary.ini file.

Irrespective of this setting, the configuration dialog is not displayed if there are no write permissions to the SlideLibrary.ini configuration file.

The configuration file can only be displayed again by using the configuration file described in section 4.4.6.1.1.

4.4.6 The configuration file

The configuration of the SlideLibrary is stored in the “SlideLibrary.ini” file in the installation directory of the SlideLibrary add-in (also referred to as the “Target directory”, see 3.2). As described in Section 3, this file can also be distributed during the installation. In this way, you can transfer your personal configuration of the SlideLibrary to further workstations, or assign a configuration for various

workstations. If no configuration file is created when PowerPoint is started with an activated SlideLibrary add-in, a configuration file is created with standard settings in the installation directory of the SlideLibrary add-in, provided that there are write permissions for this directory for the registered users.

4.4.6.1 Manual processing of the configuration file

The SlideLibrary configuration file can also be processed or created manually. To do this, open or create the "SlideLibrary.ini" file with a text editor. The configuration file is structured as a line-by-line arrangement of key/value pairs according to the following formula:

Key = value

Key	Possible values	Maximum number of appearances in the configuration file
ShowDialog	True or False	1
Library	File path for a library file or a directory	Unlimited

ShowDialog displays and hides the configuration dialog (see 4.4.5) and *Library* indicates paths to library files (see 4.4.1, 4.4.2 and 4.4.4).

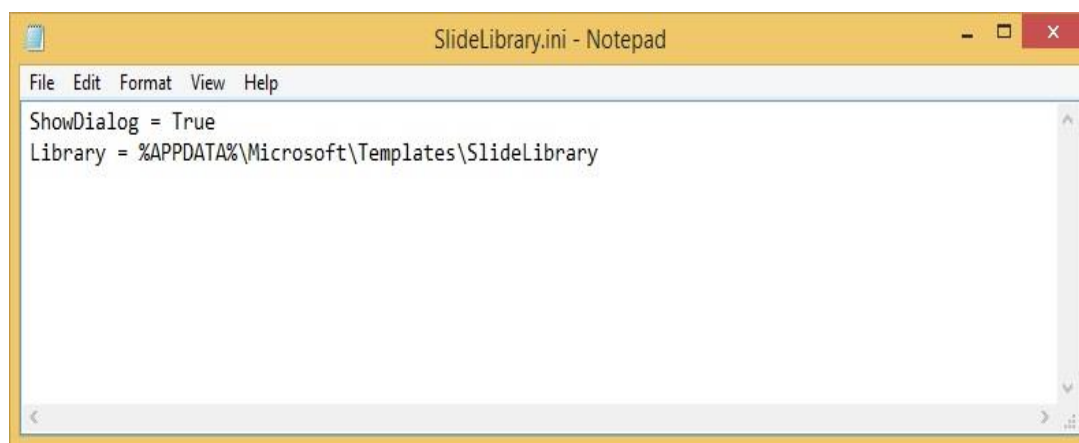


Figure 7: Screenshot for the Slidelibrary.ini configuration file

4.4.6.1.1 Displaying the configuration dialog

If the configuration dialog has been hidden (see 4.4.5), it can only be displayed again using **ShowDialog = True**.

4.5 The admin tool for the SlideLibrary

The SlideLibrary admin tool is used to clearly name slides in the SlideLibrary files, to assign categories (register tabs) and to associate slides with keywords. Creating a category causes a tab with the same name to be displayed in the dialog. The admin tool is an independent add-in as it is usually not required by standard users but is aimed at administrators. Like the SlideLibrary, the admin tool can be installed automatically using a setup file. Once installation has been successfully completed, it can be started by using the ribbon, similar to the SlideLibrary itself.

The admin tool accesses the relevant active presentation in PowerPoint and lists all of the slides in this presentation in the top part of the window. The first column contains the categories and slide names followed by the slide number and its title in the second column as well as its keywords in the third column. The slide names can be visually distinguished as they are indented from the categories. By clicking on the relevant line you can select a category/slide and edit it using the input fields

underneath. To provide a better overview, the current view in PowerPoint changes to the chosen slide in the dialog background.

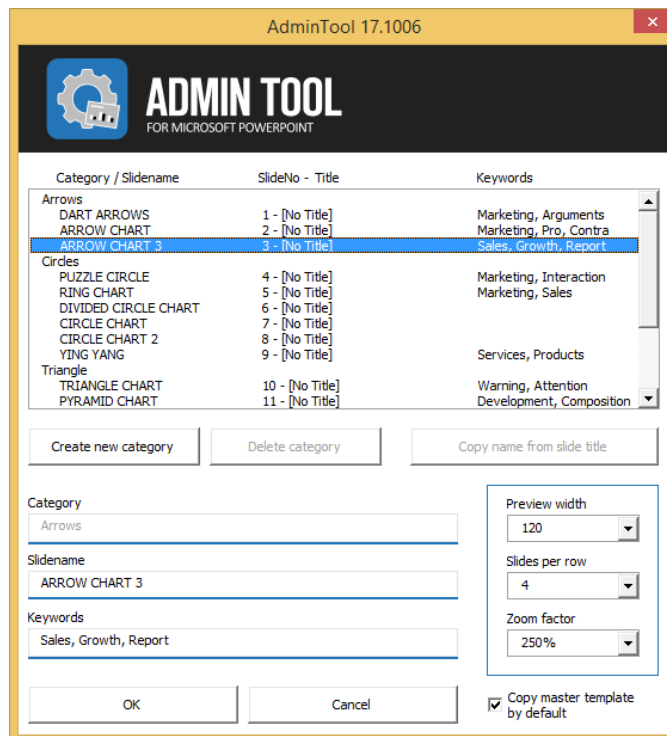


Figure 8: Dialog window of the admin tool

4.5.1 Applying titles as names

Since the names are very often supposed to correspond to the existing slide titles, the title of the relevant slide chosen can be copied using the “Copy name from slide title” button.

4.5.2 Creating a new category

In the list, choose the slides with which the new category is to begin and click on “Create new category”. Change the name of the new category using the “Category” input field.

4.5.3 Deleting a category

Choose the category to be deleted and click on “Delete category”. The slides in the category are retained.

4.5.4 Editing keywords

The slides within the SlideLibrary files can be associated to keywords, which are searchable by using the SlideLibrary search function. That way slides with equal or similar characteristics can be grouped together beyond assigning them to a category. Keywords on any slide can be examined by hovering the mouse pointer above the thumbnail of the slide.

4.5.5 Width of the thumbnails

In the normal setting, the thumbnails are 120 pixels wide. Their height is calculated automatically from the width-to-height ratio of the slides. You can adjust the size of these images. However, we recommend that you only do this if you have a small number of sample slides.

4.5.6 Number of slides per line

In a category, in the normal setting 4 slides each are shown in up to three rows. If your categories have more than 12 slides, you can increase the number so that you do not have to scroll in the categories. If

there is a small number of up to no more than 9 slides per category, we recommend that the display be reduced to 3 slides in a row and that the size of the thumbnails be increased to 160 pixels.

4.5.7 Zoom factor

In the SlideLibrary hovering the mouse pointer over a thumbnail of a slide will enlarge the thumbnail display. The size of that display depends on both the configured width of the thumbnails and the configured zoom factor which can be chosen in the drop down menu. The option “no zoom” deactivates the enlarged display of the thumbnails in the SlideLibrary. By default the zoom factor has a value of 250%.

4.5.8 Copy master activated

In exceptional cases, you may not want to copy the master of the slide files into the target presentation. With this option you can determine whether the control box is activated as standard when the SlideLibrary is opened.

5 Application

In PowerPoint 2007, 2010 and 2013 the SlideLibrary is opened by using the button of the same name in the Start menu ribbon. Under PowerPoint XP/2003, the button for starting the SlideLibrary is displayed in a separate toolbar.

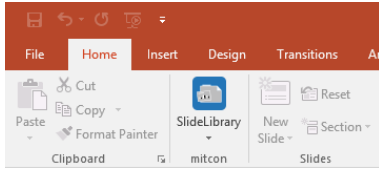


Figure 9: SlideLibrary in the ribbon with available arrow below the logo

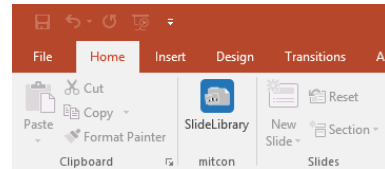


Figure 10: SlideLibrary in the ribbon configuration without configuration arrow

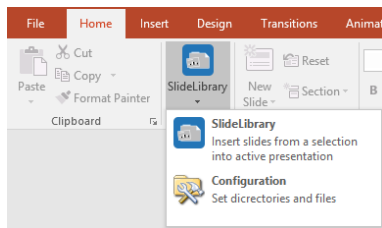


Figure 11: SlideLibrary menu

The SlideLibrary dialog is divided into two parts, a main dialog which provides the basic functions of the SlideLibrary and an extended dialog with complementary functions.

5.1 Main dialog of the SlideLibrary

This dialog allows compiling and insertion of slides from configured library files. It consists of six parts:

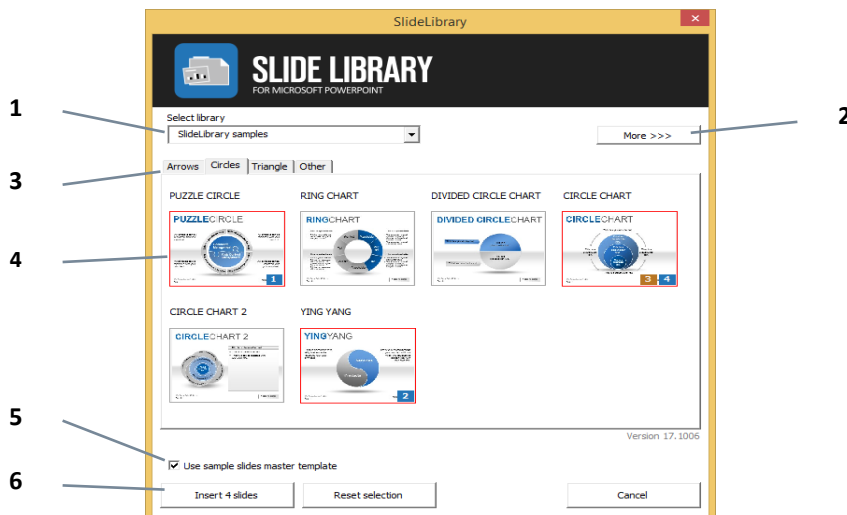


Figure 12: SlideLibrary main dialog

1. Dropdown list for the loaded libraries (not displayed if only one library file is available)
2. Button to switch between showing and hiding the extended SlideLibrary dialog
3. Register tabs showing the categories for the currently selected library
4. Display and selection option of slides from the category that is currently selected
5. Selection box that allows transfer of the template master
6. Buttons for inserting selected slides, cancelling the current selection and cancelling the SlideLibrary dialog without action

5.1.1 Thumbnail generation

Thumbnails for the slides are created automatically to display the slides that can be selected when the SlideLibrary dialog is called and a library file is selected in the SlideLibrary dialog. A progress bar is displayed during this operation that indicates the time which remains to perform this task. Creation of thumbnails is essential for the convenient use of the SlideLibrary. Interrupting the thumbnail creation process means that the SlideLibrary dialog will not be displayed.

The thumbnail creation will be performed when a library item was changed, deleted or added into the relevant library. The created thumbnails are used permanently unless something has been changed in the concerned library. Changes to the library file will automatically be recognised and the thumbnails will be updated.

If the current user has write permission in the directory of a slide file, a subdirectory FBthumbs [filename] is created with the thumbnails and name files. These files can also be used by other users in common directories that are employed. If the user does not have the necessary write permissions, the thumbnails are created in the local TEMP directory.

5.1.2 Selection of libraries

If more than one library file is available, all available libraries are displayed in a dropdown in the SlideLibrary dialog. Using the selection list, one of the library files can be selected to display the slides contained. Click into the selection list and select the library you like to work with. Immediately after the selection, the thumbnail creation, described in section 5.1.1, will automatically be performed.

The names of the libraries shown correspond to the filenames of the library files without any file-name expansion. Libraries can be added to the list using the configuration dialog described in section 4.4 (see 4.4.1 and 4.4.2). Libraries can also be removed from the list (see 4.4.4).

5.1.3 Selection of slides to be added

Slides in a library can be selected and deselected by clicking on the respective thumbnail. Slides marked for insertion are highlighted by a red border around the thumbnail. Slides can be inserted into the presentation more than once. Any click on a thumbnail marks that slide for insertion once and receives a small label with a number on it which reflects to the insertion order. Clicking on such a label selects the corresponding list entry in the sorting of the slide selection (identifiable by the orange colouring of the position label) and enables further modification by key combinations (see also section 5.2.2).

The slides within a library may be organised into one or several categories, between which you can switch using the register tabs above the slide selection. The selection of slides remains in place when you switch from one category to another, so that even slides from various categories in one library can be selected at once. Selecting another library cleans up the selection of the slides to be inserted.

Selected slides can be inserted into the current presentation using the “Insert x slides” button. These slides are then inserted after the currently selected slide of your presentation. Using the “Reset selection” button allows you to clean up the selection of slides.

The assignment of slides to a category, the number and naming of the categories in a library as well as the keywords for the slides can be configured using the admin tool for the SlideLibrary (see sections 4.5, 4.5.2 and 4.5.3).

Tip: you can hold the mouse pointer above a thumbnail of a slide to enlarge the thumbnail.

5.1.4 Copying the slide master

The selection box “Use sample slides master template” copies the thumbnail master of the selected slides into the current presentation. If this option is not selected, the template master for the target presentation is assigned for the selected slides. As a result, the display can deviate heavily from the

preview. If the template master is already contained in the target presentation, it is not copied again in order not to unnecessarily enlarge the file size of the presentation.

As described in Section 4.5.8, the default setting for this selection box can be configured.

5.2 Extended SlideLibrary dialog

The extended SlideLibrary dialog provides a slide search as well as a sorting of the slides to be inserted. The extended dialog can be accessed by clicking the button “More >>>” and it can be hidden again by clicking the button “Less <<<”. The extended dialog consists of five parts:

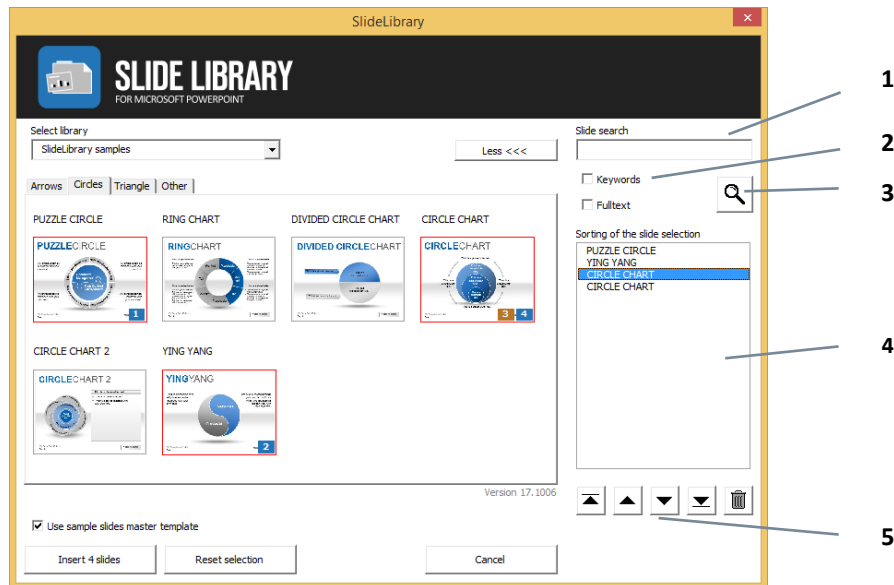


Figure 13: The extended SlideLibrary dialog

1. Input field for entering a search term
2. Two check boxes that allow the specification of additional search criteria
3. Button to execute the search for the given search term within the chosen search criteria
4. Sort order of selected slides
5. Buttons to change sort order or remove slides marked for insertion
(from left to right: move selected entries to the top of the list, move selected entries one position upwards, move selected entries one position downwards, move selected entries to the end of the list, remove selected entry or entries from the list)

5.2.1 Slide search

Slide search within the current library file allows to search for slides which fit the search term and criteria. The search term specified in the input field is being searched for in the slide names, given before with the admin tool. In addition to that, corresponding to the chosen options, the keywords of each slide (check box “Keywords”) and the containing text of each slide (check box “Fulltext”) can be searched.

As a result, all slides satisfying the search criteria are listed in an additional register tab named “Search results”. Slides marked for insertion are highlighted by a red border and a label in the lower right corner of a thumbnail shows how often a slide is marked for insertion.

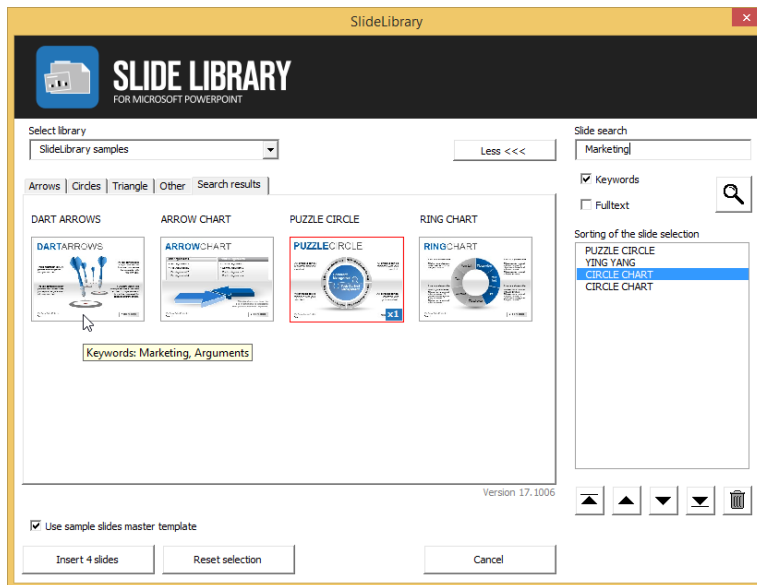


Figure 14: Example search in the extended SlideLibrary dialog

5.2.2 Sorting of the slide selection

The list box “Sorting of the slide selection” presents a preview of the order of selected slides which represents how these slides will be inserted into the active presentation (by clicking the button “Insert x slides”, see 5.1.3). This order, as well as the selection of the list entries, corresponds to the position labels at the lower edge of the slide thumbnails.

The order can be modified by use of the buttons below the list. The first button (alternatively the key combination *Ctrl* + *left arrow* or the key *Home*) moves the selected list entries to the top of the list, the second button (or alternatively the *left arrow* key) moves the selected list entries one position upwards, the third button (or alternatively the *right arrow* key) moves the selected list entries one position downwards, the fourth button (alternatively the key combination *Ctrl* + *right arrow* or the key *End*) moves selected list entries to the end of the list and the fifth button (or alternatively the *Delete* key) removes the selected entries from the list.

Selection of more than one list entry can be achieved by holding the Shift key. The key combination *Ctrl* + *A* can be used to select all list entries.

6 Uninstall

You can uninstall the SlideLibrary add-in in two sub-steps:

- Deactivate the SlideLibrary add-in in PowerPoint
- Remove the add-in files

6.1 Deactivation of the SlideLibrary add-in

You can deactivate the SlideLibrary add-in using PowerPoint, or you can deactivate it manually by removing the registry entries using the registry editor.

However, you can only deactivate using PowerPoint's add-in management if the add-in has been installed for each user. (see 3.1.1.2.2)

6.1.1 Deactivation via PowerPoint

- Under PowerPoint XP, 2003:
 - Choose "Extras"
 - Choose "Add-Ins..."
 - In the add-ins dialog that opens, choose the entry "SlideLibrary"
 - Click on the "Remove" button
 - Click on the "Close" button
- Under PowerPoint 2007, 2010, 2013, 2016:
 - Choose the "File" tab or the Office button in 2007
 - Choose "Options"
 - In the options dialog that opens, choose the "Add-Ins" section
 - In the "Manage:" selection list, choose the list entry "PowerPoint Add-ins"
 - Click on the "Go..." button
 - In the add-ins dialog that opens, choose the entry "SlideLibrary"
 - Click on the "Remove" button
 - Click on the "Close" button

6.1.2 Manual removal of registry entries

Note: the incorrect use of the registry editor can cause serious damage to your computer. Be careful and only perform changes if you are quite sure what you are doing.

Open the registry editor and navigate to your PowerPoint version and the registry path that corresponds to the installation context (see 3.2, table). Delete the "SlideLibrary" key there and all subkeys.

6.2 Removing the add-in files

After the deactivation of the SlideLibrary add-in, for a complete uninstall the files of the SlideLibrary add-in can also be removed from the installation directory (also called the "target directory", see 3.2). The files of the SlideLibrary add-in are named according to the formula "SlideLibrary.XYZ" (with a corresponding file ending in the place of XYZ) and can therefore be easily identified.

7 Index of key words

Activation		
PowerPoint add-in management	7	
Registry file	7	
Admin tool	11, 12	
Administrator privileges	4	
Configuration		
Configuration file	10, 11	
Standard path	9	
Swap banner	9	
Custom installation	4	
Delivery scope	3	
File format .ppa	3	
File format .ppam	3	
Installation		
All of the computer's users	5	
Current user installation	5	
Custom Installation	3	
Installation path	4	
Setup file	3	
Standard Installation	3	
Uninstall	18	
Unsupervised mode	6	
Installation assistant	3	
Installation context	4	
Libraries	3	
MacOS	3	
Server 2012	3	
Setup file	3	
Slide pool	3	
Standard installation	4	
Supported PowerPoint versions	3	
Technical requirements	3	
terminal servers	3	
Windows 7	3	
Windows 8	3	
Windows Vista	3	
Windows XP	3	

8 Index of figures

Figure 1:	Choosing the installation type	3
Figure 2:	Choosing the destination location	4
Figure 3:	Choosing the context	5
Figure 4:	Managing the PowerPoint add-ins	5
Figure 5:	SlideLibrary configuration dialog	9
Figure 6:	Notification about the generalisation of paths	10
Figure 7:	Screenshot for the Slidelibrary.ini configuration file	11
Figure 8:	Dialog window of the admin tool	12
Figure 9:	SlideLibrary in the ribbon with available arrow below the logo	14
Figure 10:	SlideLibrary in the ribbon configuration without configuration arrow	14
Figure 11:	SlideLibrary menu	14
Figure 12:	SlideLibrary main dialog	14
Figure 13:	The extended SlideLibrary dialog	16
Figure 14:	Example search in the extended SlideLibrary dialog	17